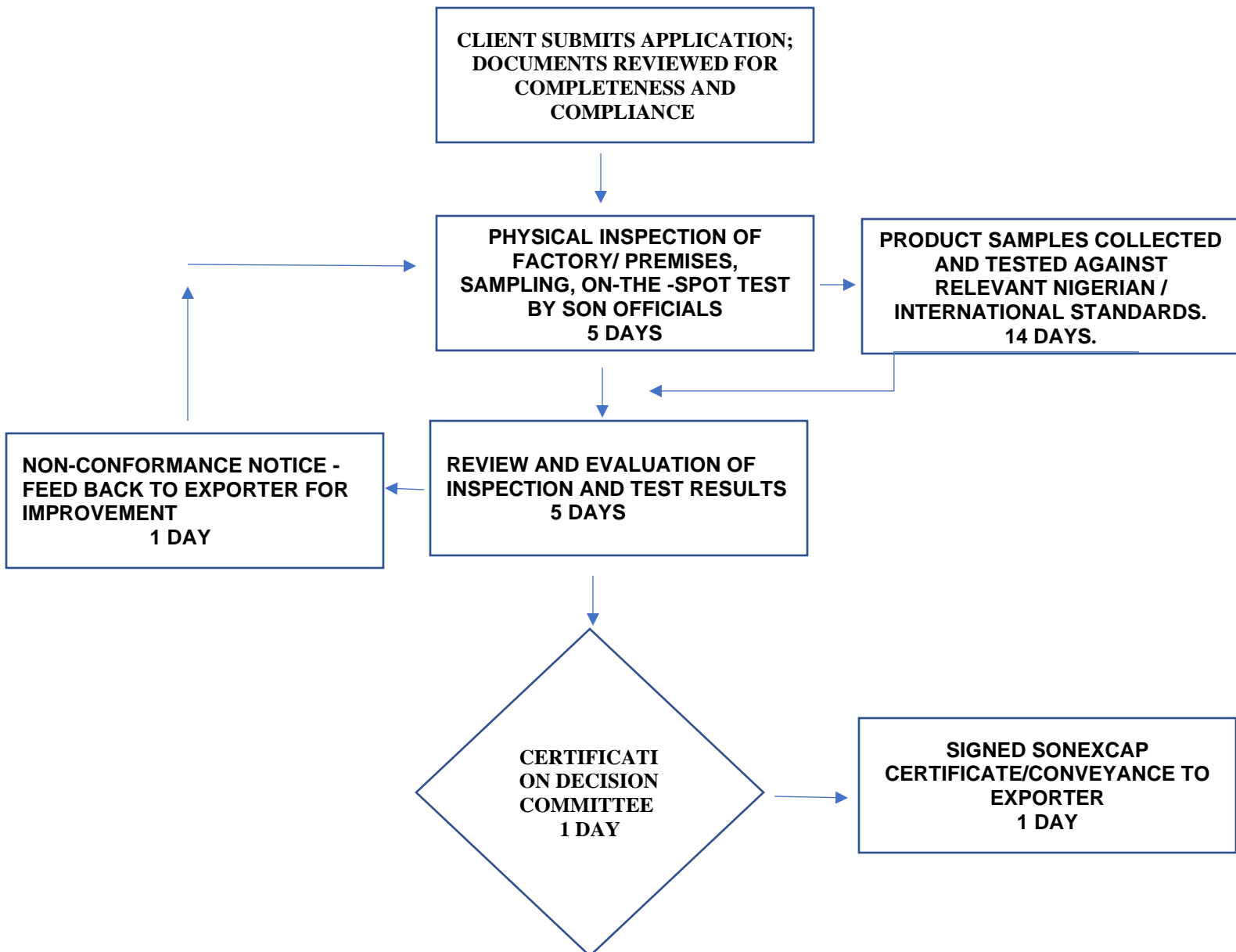




**NATIONAL PRODUCT
CERTIFICATION DEPARTMENT
(NPCD)**

SONEXCAP FLOW CHART



DURATION FOR SONEXCAP CERTIFICATION — ~16 TO 22 WORKING DAYS
(EFFECTIVE FROM THE SUCCESSFUL SUBMISSION OF A COMPLETE APPLICATION)

REQUIREMENTS FOR SUCCESSFUL APPLICATION

- CAC Certificate of Incorporation / Business Name Registration
- Product description and applicable Nigerian / International Standard reference
- Contract
- Valid MANCAP Certificate (where Applicable)
- Previous Certificate of Analysis / Test Reports (where available)