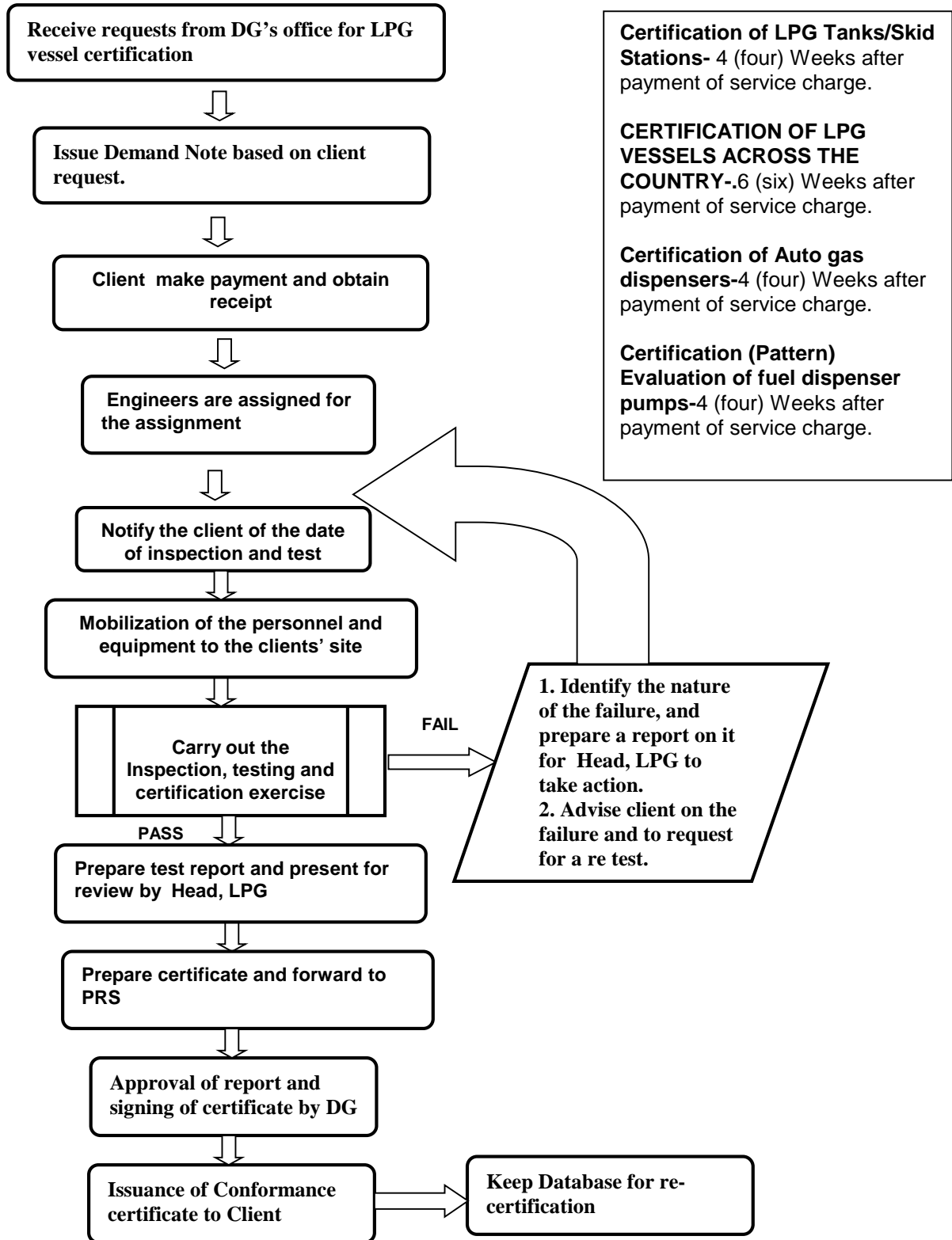




LPG CERTIFICATION FLOWCHART



	ACTIVITY	NAIRA	NAIRA	Timeline
1	Certification of LPG Tanks/Skid Stations	(Fabricated in Nigeria) Per vessel. (Excluding logistics for the engineers and equipment).	(Imported) Per vessel. (Excluding logistics for the engineers and equipment).	4 (four) Weeks after payment of service charge.
	Less than 20,000 L	50,000.00	200,000.00	
	20,000-60,000L	70,000.00	500,000.00	
	60,000-100,000L	100,000.00	550,000.00	
	100,000-150,000L	150,000.00	650,000.00	
	150,000-250,000L	200,000.00	700,000.00	
	Above 250L	300,000.00	750,000.00	
	Spherical Tanks	500,000.000	1,000,000.00	
	CERTIFICATION OF LPG VESSELS ACROSS THE COUNTRY. Collective certification of LPG vessels belonging to 5 companies and above (At the same time) in various states of the federation.		500,000.00 flat rate per vessel covering service charge, logistics for the engineers and equipment..	6 (six) Weeks after payment of service charge.
2	Certification of Auto gas dispensers		300,000.00	4 (four) Weeks after payment of service charge.
3	Certification (Pattern) Evaluation of fuel dispenser pumps		200,000.00	4 (four) Weeks after payment of service charge.